

# New Features in MasterWorks Collection 1.0.1

## OVERVIEW

This document provides information about new features in the MasterWorks Collection and late-breaking information not covered in the *MasterWorks Collection User Guide*.

System requirements .....	1
Installation .....	1
Enhancements in version 1.0.1 .....	2

## SYSTEM REQUIREMENTS

### Minimum requirements

The MasterWorks Collection 1.0.1 requires:

- PowerPC G5 CPU 2.0 GHz or faster (multiple CPUs or multi-core CPU required), or Intel Core Duo CPU or faster
- 2 GB RAM or more
- Mac OS X version 10.5 or 10.6; v10.5.8 or later is required
- A display with 1024 x 768 resolution or higher
- An available USB port for the iLok USB key
- Pro Tools, Logic, Cubase, Live, or other digital audio workstation (or other host) that supports RTAS, AU, VST3, or MAS effects plug-ins

### Computer recommendations

The recommended system is:

- Intel Core 2 Duo CPU 2.0 GHz or faster
- 4 GB RAM or more
- A display with 1280 x 1024 resolution or higher

## INSTALLATION

### Important! Install the iLok drivers first

Before installing the MasterWorks Collection or connecting your iLok USB SmartKey, install the iLok drivers, as follows:

- 1 Insert the *MasterWorks Collection Installer* CD and open the *InterLok Extensions Installer* folder; or, if you have downloaded the latest iLok drivers, locate the folder containing the download.
- 2 Double-click the InterLok extensions installer.
- 3 Follow the directions the installer gives you.
- 4 Restart your computer, then connect the iLok USB SmartKey to an available USB port.

### Next, run the MasterWorks Collection installer

Run the MasterWorks Collection installer next, as follows:

- 1 Insert the *MasterWorks Collection Installer* CD; or, if you have downloaded the MasterWorks Collection installer, locate the folder containing the download.
- 2 Double-click *MasterWorks Collection Installer*.
- 3 Follow the directions the installer gives you.

## ENHANCEMENTS IN VERSION 1.0.1

Improved impulse response management .....2  
Other changes .....2

### Improved impulse response management

The importing and managing of impulse response files has been improved.

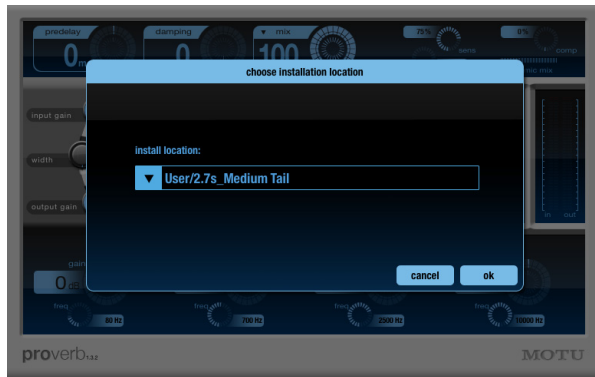


Figure 1: Importing impulse responses

Any number of files or folders may be dragged onto ProVerb to import them. When files or folders are dragged onto ProVerb, you will be prompted to select the installation location for the files. The files being imported can be copied to Shared, User, or Project, or any subfolder in one of those locations.

While an import is in progress, a progress bar is shown. The import can be cancelled at any time with the Cancel button.

### Removing impulse responses

To remove impulse responses from your ProVerb library:

- 1 Quit your host application.
- 2 Locate the desired category (Shared, User, or Project) in the Finder.
- 3 If you would like to remove the entire category, move the bundle to the Trash. If you would like to remove individual files or folders from that category, right-click the bundle file and choose *Show Package Contents* from the contextual menu. Select the desired folders and move them to the Trash.

The next time your host application is opened, the impulse response library will update to reflect the changes.

### Next/previous IR buttons

Next/previous buttons now appear to the right of the currently loaded impulse response. When the last or first impulse response is reached, the next/previous buttons will wrap around to the other end of the list.

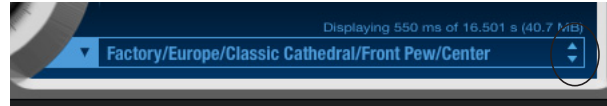


Figure 2: Next/previous impulse response arrows

### Shortcut menu

Right-click on the path of the current impulse response to display a shortcut menu containing the other impulse responses in the same submenu.

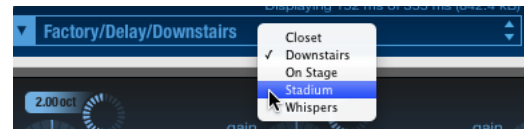


Figure 3: Impulse response shortcut menu

### Other changes

Improvements, optimizations, and refinements can be found in the following areas:

- **MasterWorks EQ:** Shift-dragging of EQ points in graph.
- **MasterWorks Leveler:** state saving and loading.
- **ProVerb:** clicking on meters in Logic; increased resolution of readout.
- **All:** display of factory preset names in Logic.